



ANLY CONTROLLER

AG4Q-212S EXCHANGE RELAY



CHARACTERISTIC :

- 2 set of C output contacts
- Rising-edge trigger (Power-on) or Falling-edge trigger (Shut-off)
- State will be kept while in shut-off mode until the next signal comes

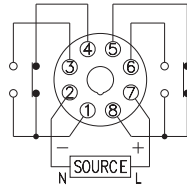
SPECIFICATION :

| | |
|-----------------------------------|--|
| Operating voltage | DC(V): 12, 24 AC(V): 12, 24, 110, 220, 240 |
| Allowable operating voltage range | 85~110% of rated operating voltage |
| Rated frequency | 50 / 60 Hz |
| Contact rating | 250VAC 2A (resistive load) |
| Reset time | MAX 0.3S |
| Power consumption | Approx. 3VA |
| Life | Mechanical: 5,000,000 times Electrical: 100,000 times |
| Ambient temperature | -10 ~ +50°C (without condensation & freezing) |
| Ambient humidity | MAX 85% RH (without condensation) |
| Altitude | MAX 2000m |
| Weight | Approx. 135g |

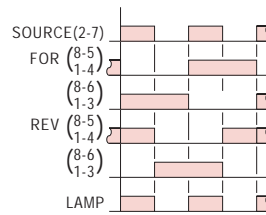
TYPE SELECTION :

| | |
|------------------------|-----------------------|
| Type | AG4Q-212S |
| Contact rating | 250VAC 2A |
| Power off keep on | <input type="radio"/> |
| Trigger edge selection | <input type="radio"/> |

CONNECTION :

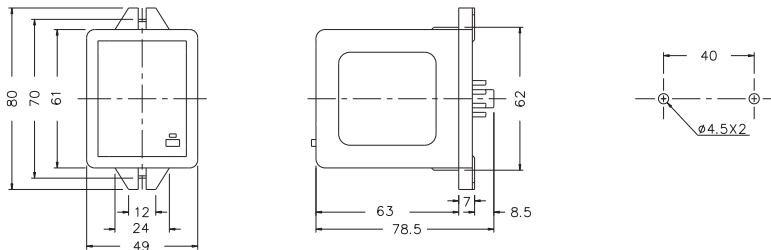


TIMING CHART :



DIMENSIONS : (mm)

N type(Surface Mounting): Using 8PFA Socket



Tolerance:±0.1

ANLY ELECTRONICS CO., LTD.

<http://www.anly.com.tw>

TAIWAN MAIN OFFICE : ANLY ELECTRONICS CO., LTD.

No.19, Lane 202, Fushou St., Xinzhuang Dist., New Taipei City 242, Taiwan
TEL: +886-2-2996-3202 FAX: +886-2-2996-2017

HONG KONG OFFICE : ANLY ELECTRONICS (HK) LTD.

Flat K, 13/F, Edward Mansion, 141 Prince Edward Road W., Kowloon, Hong Kong
TEL: +852-2397-2505 FAX: +852-2397-6080

CHINA OFFICE : ANLY TECHNOLOGY (WUXI) CO., LTD.

2F, Building A, Plot 1, No. 28, Zhanhong Rd., Xinwu Dist., Wuxi, Jiangsu, P.R.China
TEL: +86-510-85304801~3

MALAYSIA OFFICE : JUSTY ELECTRONICS (M) SDN. BHD.

No.1, Jalan 6/89B, Kawasan Perindustrian Trisegi, Batu 3 1/2 Off Jalan Sungei Besi, 57100 Kuala Lumpur, Malaysia
TEL: +60-3-7983-5758 FAX: +60-3-7981-5052

INDONESIA OFFICE : PT. ANLY ELECTRONICS INDONESIA

Jl. Pangeran Jayakarta 117/B9, Jakarta Pusat, 10730 Indonesia
TEL: +62-21-624-8436 FAX: +62-21-626-1228

NO. AG4Q212S-W-A